



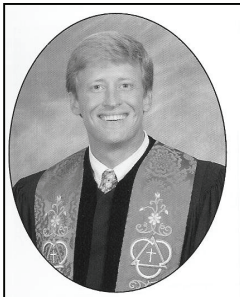
# First Press

The First Presbyterian Church Newsletter

February 2010

Rev. Dr. L. Holton Siegling, Jr. - Senior Pastor  
Rev. Dr. Doug Ganyo - Associate Pastor  
www.1stpres-fb.com

## Grappling with Difficult Passages



by the Reverend Dr.  
L. Holton Siegling, Jr.

Dear Friends,  
Often our friends in the Original Adults Sunday School Class express to me their thoughtful questions regarding what the Bible says about this or that topic. Recently George Geiger and I talked briefly about why Jesus cursed the fig tree and why it later died. In Mark's Gospel (cf. Mk 11: 12

-25) the story of the fig tree is in close proximity to the story about Jesus cleansing the temple. Partly for that reason, both the fig tree and the temple can be understood as analogous to Israel; both are alive, but neither is bearing the desired fruit.

Let's not, however, use this text to denigrate our Jewish ancestors because, if we simply look in the mirror, I suspect that we will observe some scribal tendencies and a level of everyday living which can also be devoid of fruit. In these accounts other words such as "believe" and "pray" are used to provide us with additional clues about important lessons to be learned regarding faith, prayer, and forgiveness. In other words, Jesus wanted the disciples to be aware of God's power to assist them to live fruitful, productive lives, not just appear to do so.

Another passage that the class has grappled with is the one about the Syrophoenician woman (cf. Mk 7:24-30). In that passage Jesus offers a painful proverb about Jews and Gentiles when he compares them to children and dogs; however, in the end, Jesus

ministers to that persistent Gentile woman about God's love, thus demonstrating to the disciples God's concern to all people.

How tempting it would be for today's church to think of the state of the Syrophoenician woman and then presume that Jesus is so burdened with the work set before him that he has neither the time nor the energy to deal with yet another of the world's needs. How tempting it would also be for us to forget that Jesus sees and expects from our often spiritually unfruitful lives so much more than what the world sees and expects.

It is a blessing to be able to study God's Word and explore its meaning for us today. For example, when we see the incredible needs that exist in a place such as Haiti, should we not remember that God saw those hurting people first? When we see people who are outcasts and when we confront situations that seem hopeless, should we not remember that God is at work in individual lives and in the life of the world to bring about healing and to offer hope for a future?

As you can see, I get excited when we talk about the Bible's challenging passages; for that reason, I intend to offer this summer a series of sermons on some of the Bible's more difficult texts. Perhaps there are some verses that you have always wondered about. If so, I encourage you to share the passages with me so that I may consider focusing on them. Until I speak with you again, take care and God bless.

In Christ's Service,

Holton

## Stephen Ministry



The first Sunday in December brought great joy to me as a witness to the ordination of fifteen members of our congregation to give of themselves to assist others in times of need. As a recent witness of such loving care during my wife's final struggle with breast cancer, I write this short note both as a thank you and an encouragement to all to make your situation known.

The efforts to breathe new life into this ministry is a most welcome sign that we all are truly ministers in Christ's church. I believe we lost a significant opportunity when the Stephen Ministry ceased functioning several years ago because of a lack of requests for receivers of this care. Please make your situation known, you will be witness to Christ's love through others, and thank you for this ministry.

-Rich Lang

## Cold Night Shelter



A **Cold Night Shelter** is up and running with the help of First Presbyterian. CNS is open to the cold and homeless of our community on nights when the temperature is expected to be below 40 de-

grees. First Pres has agreed to staff the shelter on Thursday nights, and Gene Sovereign and Rich Lang are chairing this ministry on our behalf. If you wish to assist Gene and Rich in this ministry, please get in touch with one of them or call the church office, 261-3837.



## Prayer Shawl Ministry

The Presbyterian Women are beginning a **Prayer Shawl Ministry**. Under the leadership of Jane Marmontello, we will knit and crochet shawls, and, by combining this with prayer, will minister to hospice patients, the elderly, and others in need of God's comfort. Plan to join your sisters in Christ for a new experience in our journey of faith! Contact Jane, [jmarmont7@bellsouth.net](mailto:jmarmont7@bellsouth.net), or Trish, [tbooton@comcast.net](mailto:tbooton@comcast.net), for more details.

Our thanks go to Bonnie and Gene Sovereign for making us aware of this ministry of comfort.

*"For it was you who formed my inward parts; you knit me together in my mother's womb. I praise you, for I am fearfully and wonderfully made. Wonderful are your works!"*

*Psalm 139:13-14a NRSV*

## Coffee Service

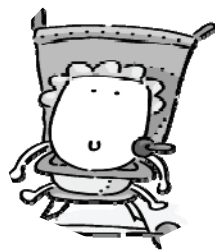


- February 7th -Mission
- February 14th - Personnel

- February 21st - Presbyterian Men
- February 28th - Property

## MOM,ME Playgroup

MOM,ME meets every Wednesday morning 9:30 - 11 a.m. in Noah's Place. MOM,ME is a delightful and interesting group of moms and children growing and nurturing, networking and socializing, sharing and caring with all who come. This gathering of moms and children meets year round. Spread the word. This ministry is open to the public. No reservations are needed, just drop in. Park your stroller out front. You never know who might stop by with a guitar and a song.



## Presbyterian Women's News

Rejoice in the Lord always; again I will say, Rejoice.

—Philippians 4:4

Presbyterian Women at FPC are celebrating our *Joy in Christ*. All that we do centers on that joy and our sharing of it as we serve our Lord. In our efforts for missions, when we knit prayer shawls or assemble gifts for victims of disaster, as we meet in large or small groups, we rejoice that God is with us—as He has promised.



All of our activities are open to every woman at First Presbyterian, and you do not need to be a member of a circle to participate. However, there is a special joy to be found in belonging to a circle, which embraces Bible study, prayer, and fellowship. To learn more about our circles, contact Trish Booton, 491-1814, tbooton@comcast.net.

In response to the devastation and heartbreak in Haiti, the women of First Pres assembled 100 Gift of the Heart hygiene kits for disaster relief. These kits, put together with love and care by our members, included soap, wash cloths, towels, combs, toothbrushes, and other necessary health items. They were boxed and sent to the World Church Service to be used in Haiti and other areas where people are facing adversity.

### February Circle Meetings

- Elizabeth Circle –February 11, 10 a.m., Jim Thomas Hall
- Esther Circle – February 11, 12:30 p.m., Kay Black's home
- Martha Circle February 10, 10:00 a.m., Jane Dickison's home
- Ruth Circle - February 11, 9:30 a.m., Beth Tilton's home

## 2010 PW Coordinating Team

Moderator.....Trish Booton  
Vice Moderator.....Jane Dickison  
Secretary.....Judy Levers  
Treasure.....Barbara Hooper  
Missions.....Trish Kramer  
Historian.....Barbara Noden  
Special Projects.....Carolyn Guerrin

### Circle Leaders

**Elizabeth:** Linda Johns  
Addie Underwood  
**Esther:** Sharon Scherer  
**Martha:** Courtney Fassbender  
**Ruth:** Dot Bell  
Edith Jones

---

*Thank you, Marilyn Showalter, for your leadership the past two years. You have inspired us with your loving Christian spirit. May God bless you always.*

---

# BOGO

Take advantage of the  
**Buy One Get One**  
offers from local merchants.  
**Keep One and Give One**  
to Barnabas.  
A drop off spot is in Jim Thomas Hall.

## Presbyterian Men

The February meeting of Presbyterian Men will feature Cursillo. Cursillo is a Christian lay movement that began in the early 1940's by the Roman Catholic Church in Spain. Its original purpose was to encourage husbands to take an active role in the spiritual life of their households. Since then many of the denominations have adopted its principles and have their own programs like our own *Presbyterian Cursillo*, the Episcopal *Cursillo*, the Methodist *Walk to Emmaus* and the Lutheran *Via De Cristo*. *Cursillo* has also been adapted for youth and prison ministries. Many of these programs are open to all believers. About 30 members of our congregation have been to a Cursillo weekend.



Involvement with Cursillo begins by attending a three-day retreat. Unlike traditional retreats where time is divided between teaching and recreation, the Via De Cristo weekend is a highly structured, intense three days. During the weekend there are numerous talks given primarily by Laity and some by Clergy. The talks are designed to focus discussion on the Christian principles and skills needed to live a Christian lifestyle. Along the way attendees learn why Paul focuses on the change of heart brought on by the Holy Spirit and to really feel Christ's love in very simple ways.

Our speaker will be Dan Roach. Dan worships and serves at St Peter's Episcopal Church. Dan has been deeply involved in the Episcopal version of Cursillo, as well as the prison ministry *Kairos*. In addition Dan has encouraged and sponsored many members of our community to attend weekends sponsored by the other denominations.

Join us on Thursday February 11 at 6:30 p.m. in Jim Thomas Hall and bring a friend. Please call the church office and let us know you are coming by 5 p.m. Tuesday February 9 so we can plan the meal.

## Intergenerational Mission Trip June 13-19, 2010

**REBUILDING IN THE GULF COAST** - On June 13th (Sunday) 2010 approximately 20 adults, youth and families will leave Fernandina Beach for a nine hour (+) drive to Houma, LA. Once there most of us will do painting, sheet rock and light construction working from the Presbyterian Disaster Assistance Volunteer Village called "Good Earth". Some families and youth will be housed in and work out of Bayou Blue Presbyterian Church in Houma, LA. Those working out of the church will be helping to restore vegetation in the hurricane devastated wetlands Southwest of New Orleans. We will be treated to Cajun cooking and the Bayou Blue Church will share their vision of restoring the wetlands, plant and animal life. We are recruiting workers who can do light reconstruction, cooking for the crew, organize our faith devotional time and help in the plantings in the Bayou country. Between the church and the PDA Volunteer Village we are sure that you can be put to work. We will be helping families there who are still recovering from Hurricanes Katrina and Rita. Please use the registration form below to sign-up and then prepare for God to bless others through you!

Name: \_\_\_\_\_

Phone: \_\_\_\_\_

Email: \_\_\_\_\_

Your preference of serving (circle those that apply): Sheetrock work, painting, light carpentry, planting reclamation, cooking.

If you or your children have any special medical needs please indicate these:

\_\_\_\_\_

If you will be driving to the service site on your own please indicate: \_\_\_ "Yes" I will drive or \_\_\_ "No" I will riding in one of the vans.

There is NO COST to go. To contribute to the Mission project you may give to the church and indicate "Mission Trip 2010". Thank you!

## 1st Café Fellowship

Wednesday Nights  
February 3<sup>rd</sup> - March 17<sup>th</sup>  
5:30-6:00p.m.

Feb. 3<sup>rd</sup> – Ham Steaks  
Feb. 10<sup>th</sup> - BBQ Chicken  
Feb. 17<sup>th</sup> – Beef Stew  
Feb. 24<sup>th</sup> – Roasted Pork Loin

### Weekly 1st Café Dinners:

(with reservations)

Adults/Youth--\$7.00 each

Children--\$3.00 each (11 and under)

Family--\$20.00

### Three ways to participate:

- Call in your reservation to the church office each week by Monday@ 4:30 P.M.
- Sign up at dinner each week.
- Pay at the door \$1.00 more without reservations.

## Wednesday Night Programs

6:00p.m.



**Feb. 3—“Crime-Proofing Yourself”**  
(Kevin Gilpin, [national-crimestop.org](http://national-crimestop.org) )

**Study Series Feb. 10-  
March 17**

### “Love Talk”

Communication for Couples

### The Faith Book Discussion Club

In the Library with Sandi Neal

### “Peacemakers”

Learning to live in peace

**Hand bells Practice @ 4:00 p.m.**

**Choir Rehearsal @ 7 p.m.**

**Nursery available from 6-7p.m.**

## Two Cents a Meal,

a campaign to ease hunger locally and around the world, will be held again this year during Lent. Canisters for your home collections will be given out



at the morning worship services on February 14 and may be returned to the church on Sunday, April 11. Coin rollers will be included in the canisters, or the committee will be most happy to accept bills and checks!



## God’s Word Changes the World

God's word does not return void. Gideons distribute scripture in more than 180 countries around the world and in more than 80 languages. They focus their efforts on certain traffic lanes of life where they can reach large numbers of people who may be searching for answers or for hope.

Students, hospital patients, travelers, prisoners, the military, and police, fire, and medical personnel—all receive free copies of the life-changing Word of God provided through the generosity of churches like ours.

## Interfaith Dinner Network

*"For I was hungry and you gave me something to eat, I was thirsty and you gave me something to drink, I was a stranger and you invited me in. The King will reply, I tell you the truth whatever you did for one of the least of these brothers of mine you did for me."* Matt 25:39 - 40

The Interfaith Dinner Network has served over 9,000 dinners at Hope House since September 2008. First Presbyterian Church has been a part of this wonderful, caring ministry since its inception. Two Circles, Esther and Ruth, and the Mission Committee will be shopping, preparing and serving meals for January, February and March.

The Interfaith Dinner Network in our church is funded by individual donations and monies that the Presbyterian Women receive from the sale of Cookbooks, Ornaments and Note cards. This month our church sent \$500.00 to the Coalition For The Homeless to fund the Interfaith Dinners at Hope House. The money will be used to buy paper products and staples for the dinners.

If you are a member of a group in the church that would like to host a dinner please contact Eunice Kurtz, Trish Booton, Bill Ericksen or Marilyn Showalter.

## Out of the Saltshaker

In February the *Saltshakers* Adult Sunday school class will continue their study on the "End Times". Best selling books like *Left Behind* and popular apocalyptic movies are popular, but are they biblically correct? Please join us for a DVD presentation by Steve Wohlberg on "*End Time Delusions*" on Sunday mornings at 9:50 am. All are welcome to join us!



## What Are You Doing Over Spring Break?



Families and youth are invited to enjoy a fabulous ski trip to Winter Park, Colorado, during the week of spring break, April 5 - 9.

We'll be flying and renting equipment there. It will be fast and fun and frozen! SNOWBALL FIGHT!!!!

If you are interested in getting away for a memorable family vacation and would like more information, contact Wade Preston, our Director of Youth and Families, at 261-3837 to reserve your space.

## Opportunities for Service

God calls us to service and He designed us to make a difference and wants us to give something back. The Worship Committee is looking for people to volunteer being ushers, lay readers, serving communion (deacons and elders), singing in the choir and helping with the Contemporary services. Is there anything holding you back from serving here at First Presbyterian Church? For more information, call Carolyn Guerrin at 261-8356. Thank you in advance for your help.

## The ANCHOR @ 11



Contemporary  
Worship  
Sunday @ 11:00

Contemporary Worship is filling the Anchor every Sunday at 11:00 a.m. Come

First Presbyterian

and See what God is doing to grow His church in Fernandina. It's a little less formal, a little more relaxed, and coffee is available throughout the service. Dr. Siegling's preaching location is always a mystery but no matter where he is, God is always present-in scripture, prayer, song and liturgy. Check it out!

### Know Doubt

By John Ortberg

Ever stumbled in your faith? Wrestled with uncertainty? Wondered if you're a true believer? If the answer is yes to any of these questions—you have reason to celebrate.

In this candid book based on his on struggle with doubt, John Ortberg traces the line between belief and unbelief and finds that it's less a dividing line between hostile camps than a razor's edge that runs through every soul. His findings point toward the relief of being totally honest. Doubt, questions, honest faith, outrageous hope—it's a chain reaction that can actually strengthen our relationship with God—and that says Ortberg is cause for celebrations.

(Available on our Good News Book table the 3rd Sunday of every month.)



## 1ST ANNUAL FPC FAMILY FILM FESTIVAL

February 26-28, 2010

FPC will soon undertake its very first effort at Servant Evangelism (SE)! You may recall from a previous article that SE involves provision of a small, free good or service to the public with no strings attached, but with an explanation of how we are led by Christ to show love to and share with others.



FPC is organizing the first Christian Family Film Festival on Amelia Island this February! Mark your calendars and sign up to help! This is probably our greatest opportunity for large scale evangelistic community outreach beyond VBS!

During the same week as the Amelia Island Film Festival, we will be showing uplifting and inspirational movies in the ANCHOR. The selected movies will address real life situations in which Christianity plays a role. Members of the Evangelism Committee will coordinate a discussion and brief gospel message following each film which will be inspiring to both non-believers and Christians.

Tickets are FREE! Invite your friends, neighbors and co-workers and plan to come with your whole family! We need lots of friendly greeters and helpers. Contact Sally Ericksen (261-2329 or [ericksenw@bellsouth.net](mailto:ericksenw@bellsouth.net)), and be a part of this exciting event!

### The Weekend Schedule

- Fri 2/26 7p Saving God**
- Sat 2/27 2p Lilies of the Field**  
**7p Fireproof**
- Sun 2/28 2p Faith Like Potatoes**

Please arrive early to purchase snacks and get a good seat. Films will begin promptly at stated times!

## Camp Montgomery Family Weekend *April 16-18*

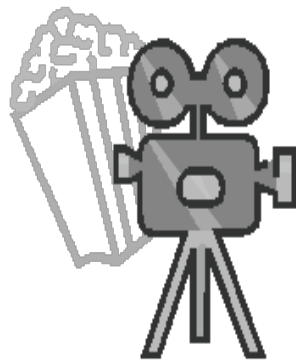


Our Camp Montgomery Family Weekend is the beneficiary of the \$1160.00 raised at the 1<sup>st</sup> Annual Chili Cook Off held in JTH on January 13<sup>th</sup>. Over 20 chili cookers participated in the fierce competition. Judges, Mark Brackbill of Amelia Is-

land Coffee and Gene Jennings from Bright Mornings, gave serious consideration to each entry.

Their unanimous decision gave the Best Chili Award to Jack Dickison, Most Unusual Chili Award to Charlotte Bowling for her sweet and spicy recipe and the Meatless Wonder Chili Award was presented to Gene Sovereign. Gift Certificates to Brett's, Ciao and Sliders restaurants were given to the winners along with a framed Award. The coveted Chili Champ Trophy went home with Jack. Start searching now for your award winning chili recipe for next year!

There will be an additional fundraiser for our Camp Montgomery Family Weekend during the Evangelism Committee's Christian Film Festival, February 26-28<sup>th</sup>! Four films will be shown in the ANCHOR. Admission is FREE and all concession sales (snacks and soda) will help decrease the cost to FPC members attending the family weekend retreat!! So come support the Film Festival and Camp Montgomery, bring your friends and buy some popcorn, candy and drinks!!



## VBS



Sailing dates are set for VBS on July 26-31. First Presbyterian will provide 5 days of High Seas Adventure plus a 6<sup>th</sup> day of Family Fun & Celebration with Hot

Dogs and Water Slides on Saturday, June 26<sup>th</sup>! Mark your summer calendars now so you don't miss any of the Fun, Adventure & pure JOY of VBS 2010! Contact your travel agent, Doris Davis, to make your cruise reservations NOW! Staterooms are going fast. Students going into Kindergarten through 5<sup>th</sup> grade in September may come on board. Nursery and Preschool boats will be available for children or grandchildren of our volunteers.

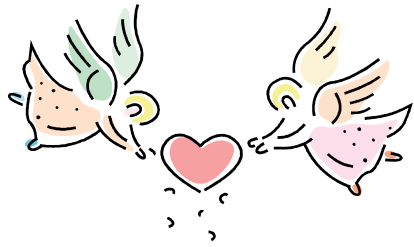
## Youth Variety Show

FPC youth will host a variety show fundraiser on Sunday, February 21 at 6:30p. in the Anchor. Please support this fundraiser by purchasing tickets and attending the event.






Tickets will be on sale in the Fellowship Hall between services during February and cost \$10 for adults, \$5 for children, and \$30 per family.

Your ticket price, in addition to the entertainment, includes a dessert buffet and the priceless opportunity to support the youth in their summer mission trips.



# February @ 1st Pres

Sun	Mon	Tue	Wed	Thu	Fri	Sat
	1 9:30a Prayer Shawl Ministry 5p TEEN CBS 5:15p Communication 6:30p Youth Comm 8:30p YA prayer grp	2 7:30a Prayer for Youth 12p Wholeness/Healing Service 4p Member Care 5p Mission Comm	3 9:30a MOM,ME 4p Hand bell Choir 5:30p 1st Cafe 6:15p Adult Programs 6:30p Choir	4 12p Bible Study 2:30p Pres Women 7p Glass Art Class	5	6 9:30 Genealogy Class
7 <b>Souper Bowl of Caring</b> 12p Evangelism Comm	8 4p Christian Ed Comm 5p TEEN CBS 8:30p YA prayer grp	9 7:30a Prayer 9a Staff Meeting 4p Cont. Worship 5:15p Acts 16:5 6p Property Comm	10 9:30a MOM,ME 4p Hand bell Choir 5:30p 1st Cafe 6:15p Adult Studies 6:30p Choir	11 12p Bible Study 6:30p Presby Men 7p Glass Art Class	12	13 9:30 Genealogy Class
14 <b>Communion</b>  6:30p Youth Variety Show practice	15 5p TEEN CBS 8:30p YA prayer grp	16 7:30a Prayer for Youth 9a Staff Meeting 4p Finance Comm 5:45 Deacons 7p Session	17 <b>Ash Wednesday</b> 9:30a MOM,ME 12p Lenten Service 4p Hand bell Choir 5:30p 1st Cafe 6:15p Adult Studies 6:30p Choir	18 9a Barnabas EB Mtg. <b>MAC Trip to Jekyll Island</b> 12p Bible Study 7p Glass Art Class	19 9:30a Prayer Shawl Ministry	20 9:30 Genealogy Class
21 Annual Congregational Meeting <b>Youth Variety Show</b> 6:30p in the ANCHOR	22 AARP Driving Class 5p TEEN CBS 8:30p YA prayer grp	23 7:30a Prayer for Youth AARP Driving Class	24 9:30a MOM,ME 3:30p Staff Meeting 4p Hand bell Choir 5:30p 1st Cafe 6:15p Adult Studies 6:30p Choir	25 12p Bible Study 	26 <b>Family Film Festival In the ANCHOR</b> 7p <b>SAVING GOD</b>	27 <b>Family Film Festival In the ANCHOR</b> 2p <b>LILIES OF THE FIELD</b> 7p <b>FIREPROOF</b>
28 <b>Family Film Festival In the ANCHOR</b> 2p <b>FAITH LIKE POTATOES</b>	<b>SUNDAY OPPORTUNITIES</b> 8:30a & 11a Traditional Worship 9:30a Coffee Fellowship 9:50a Sunday School & Adult Studies 11a Contemporary Worship in the Anchor 12:15p Senior High Sunday School		<b>Wednesday Night Studies beginning February 10th</b> <ul style="list-style-type: none"> <li>• <b>Book Club in the Library with Sandi Neal</b></li> <li>• <b>LOVE Talk w/Doug &amp; Judy Ganyo, Jesse &amp; Becky Duke and Roger &amp; Dina Martin</b></li> <li>• <b>Peacemakers with Doris Davis</b></li> </ul>			



*Stand in the GAP for those affected by the earthquake.*

**Give. Act. Pray.**

**Give** – Financial gifts are urgently needed to bring relief and continued hope for our brothers and sisters in Haiti. If you want to donate, please make your check out to the Presbytery of St. Augustine, designate your gift for Haiti – DR000064, and place it in the offering plate.

**Act** – Consider making Gift of the Heart hygiene kits. A shipment of hygiene kits is being prepared by Church World Service to send to Haiti. When widespread disasters occur, there is usually a need to replenish the supply to ensure a sufficient quantity for future disaster situations. (Presbyterian Women of First Pres have assembled 100 hygiene kits; more are needed.)

**Pray** – Join others in lifting up the people of Haiti and those seeking to provide aid in this critical time. As the eyes of the world turn to Haiti, let us join our hearts in prayer:

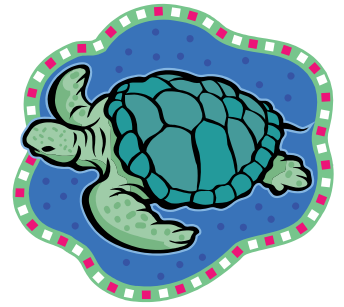
God of compassion, please watch over the people of Haiti, and weave out of these terrible happenings wonders of goodness and grace. Surround those who have been affected by tragedy with a sense of your present love, and hold them in faith. Though they are lost in grief, may they find you and be comforted; Guide us as a church to find ways of providing assistance that heals wounds and provides hope. Help us to remember that when one of your children suffers, we all suffer. Through Jesus Christ who was dead, but lives and rules this world with you. Amen

(Adapted from the Book of Common Worship)

All of the above is adapted from the Presbyterian Disaster Assistance website. To keep informed, visit the PDA website, [www.pcusa.org/pda](http://www.pcusa.org/pda) for updates and the church’s response.

**MAC TURTLE TREK**

Join the **MACs** (Mature Adult Christians) on our February get-away to the **Georgia Sea Turtle Center** on **Jekyll Island** and enjoy lunch Dutch treat at the **Jekyll**



**Island Hotel** Thursday, February 18th. Admission to the Turtle Center is \$10.00, non refundable after February 15<sup>th</sup>. Get your paid reservations into the church office no later than Friday, February 12<sup>th</sup>. This will be a fun adventure as we drive up to Jekyll where we will learn more than we ever imagined about the Sea Turtles that populate the East Coast and our own island every year with their precious hatchlings. When you make your reservation, please indicate if you need a ride or if you can drive and how many extra passengers you can accommodate. This helps tremendously with trip planning. There is a \$5.00 fee to go onto Jekyll Island. If you drive and take others who need a ride, that fee will be paid for you. We will carpool from the church at 9:30a.m. to allow plenty of time to get there and have a potty break!!

**Flower Calendar**

- February 7 - Ken and Shirley Owens in loving memory of his parents, Helen and Ray Owens.
- February 14 - Faye Birkitt in loving memory of her husband, Buddy Birkitt.
- February 21 - Marie Louise Chaplin in memory of her parents, Angel and W. A. Davis and her husband, Ernest Chaplin.
- February 28 - Nelson and Marilyn Showalter in honor of their 43rd wedding anniversary and in loving memory of their parents.



## MEET & GREET



### Our NEW Members

Reg and Michelle Goshert moved to Fernandina Beach from Charlotte, North Carolina three years ago. They are blessed by three children, Jack (9), Trevor (7), and Grace (5), who attend school, and play baseball in Yulee. Reg is a Navy submarine veteran, who is currently a financial planner with Bull and Bear Capital Investments. Michelle is a physical therapist, working for Baptist Medical Center Nassau and Precise Home Care. They reside in North Hampton, and have been worshipping and serving at FPC for two years.

A simple prayer:

"Lord, even as we enjoy the Super Bowl football game, help us be mindful of those who are without a bowl of soup to eat" is inspiring a youth-led movement to help hungry and hurting people around the world. This nationwide, youth-led effort encourages people to give one dollar while leaving worship services on Super Bowl Sunday. 100% of the collections are donated directly to the charity of each group's choice.

FPC youth will be collecting your dollars at the end of both the 8:30 and 11 a.m. worship services on Feb. 7. The money they collect will be donated to the Hope House Interfaith Dinner Network.



## A PLACE FOR YOU

The Acts 16:5 Leadership Team has identified a need at FPC for a **Lay Ministry Coordinator** to connect members, new and old, with opportunities to serve God using their gifts and talents. This would be a volunteer position for the person God is calling with gifts of administration, hospitality and discernment. Computer data entry, as well as relationship skills will be needed. Please call the church office if you feel the nudge to take on this exciting, fulfilling work.

## Acts 16:5 Questions

The Acts 16:5 Leadership Team asks you the following three questions:

1. What needs do you see in our church?

This can be as simple as an updated/new church directory, or a new class you'd like

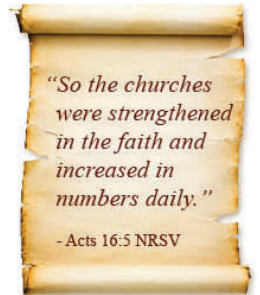
to see our church teach like, "what does it mean to be a Presbyterian?", or creating something new entirely, like the contemporary service we now have. Again, we are seeking input based on your individual perspectives and life experiences.

2. What needs do you see in our community?

Example: MOM,ME ministry. This started as a need within our church (that was expressed by one of our members) and became a very successful outreach ministry for our entire community.

3. What resources do you think we have to meet such needs?

Example: MOM,ME ministry. Noah's Place sits empty unless it is being used during Sunday worship service and other church sponsored activities for which we have a nursery. It was/is the perfect place to host MOM,ME.



## Camp Montgomery Middle School Youth Retreats

- Girls' Retreat, February 14-15 at MPCC . 3:00 PM Sunday - 3:00 PM Monday. For girls in 5th-8th grades. Cost is \$65 and includes t-shirt. \$25 for adults.
- Boys' Retreat, April 9-10 at MPCC. 5:00 PM Friday- 5:00 PM Saturday. For boys 5th-8th grades. Cost is \$65 and includes t-shirt. \$25 for adults.

### **Drivers Safety Program**

AARP will offer a Driver's Safety Program for drivers **55** and older on February 22 and 23. The class will begin at 8:45 a.m. and last until 1 p.m. Class size is limited so call 261-3837 now to register. You will save on your auto insurance by taking the course. The instructor will be Rev. Bert Swearingen. The class will meet in the fellowship hall.

**"So the churches were strengthened in faith and increased in numbers daily."  
Acts 16:5**